

# Another Hayes-Grant Presidential US Mint Medal ‘Mule’ Found

by Ken Potter

Over two years have passed since **Dr. Walter Chinoy** reported a “mule” error on a Hayes-Grant Presidential medal from the US Mint to Coin World. Finally a second specimen has been uncovered by **Bill Fagan** of Pennsylvania. Like Chinoy, Fagan found his in a set of Presidential medals that he purchased directly from the United States Mint. The difference was that Fagan put his set together from subsets while Chinoy purchased a complete set.

A ‘mule’ is a coin, medal or token struck with dies not intended to be

paired together. In this case the Rutherford B. Hayes obverse die was mistakenly paired with the reverse die that is normally restricted for use with the Ulysses S. Grant Presidential medal die. The Grant reverse contains the following inscriptions only appropriate to Grant: “Inaugurated / First Term / March 4, 1869 / Second Term / March 4, 1873.” Hayes served only one term, and was inaugurated March 5, 1877, the date on the correct reverse.

Interestingly, Chinoy obtained a total of three error medals in his set while Fagan only received the one. Chi-

noy’s set included two 180 degree rotated reverse error medals in addition to the mule. The rotated reverses were found on the Lyndon B. Johnson and the George H. W. Bush medals. These were struck in what is often referred to as “coin turn” rather than the normal “medal turn.”

As of May 25th the US Mint was still offering the Presidential medal sets on its website [www.usmint.gov](http://www.usmint.gov) for \$185.50. The individual medals and subsets were still being offered but when gathered into a complete set, they totaled to slightly more than purchasing it as a set.



Figure 1. This muled Presidential US mint medal shows Rutherford B. Hayes whose obverse die was mistakenly paired with the reverse die that is normally restricted for use with the Ulysses S. Grant Presidential medal die.

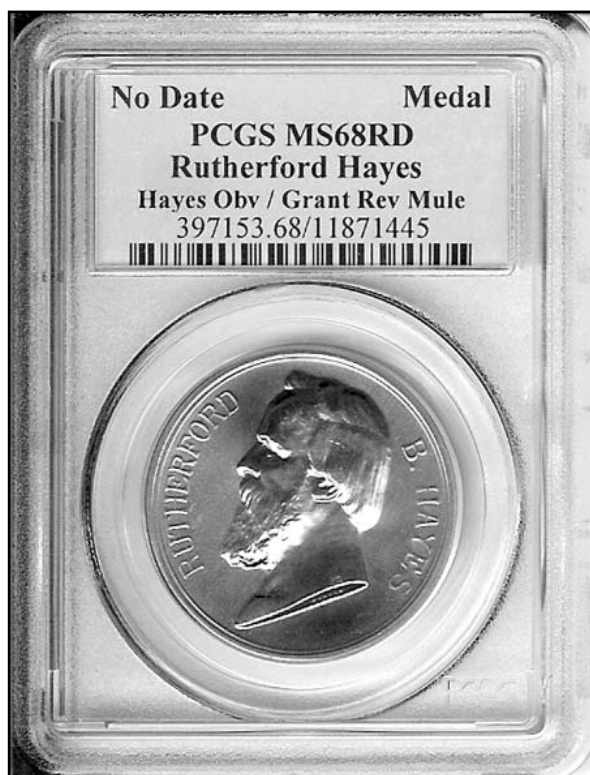
To date the only response the Mint has made in regard to the errors is a willingness to accept them in return for correctly minted medals – an option which neither Chinoy or Fagan exercised. It should be noted that the Denver Mint also offered the same Presidential medals through its souvenir shop. These pieces differ from the Philadelphia Mint examples in that they bear the Denver Mintmark while the Philadelphia Mint versions bear no Mintmark. In the past some of the Denver versions have been found with rather pronounced Repunched Mintmarks and some doubled dies. It is not known if Presidential medals are currently offered at the Denver Mint.

Fagan has been collecting coins since the late 1950s saying that he started

out like most other youngsters of the era, filling holes in Whitman coin boards for Lincoln cents and Jefferson five-cent pieces. He lost interest in 1972 when he got married but began collecting again in 1976 when he began buying Proof and Mint sets for each of his three children. In 2003 he decided to update his own collection of Proof and Mint sets and started working on a PCGS certified set of 1959 to date proof coins, which he says is nearly complete. Fagan sent his mule medal into PCGS for slabbing and is awaiting its return. ■

*Ken Potter is the official attributer and lister of world doubled dies for the Combined Organizations of Numismatic Error Collectors of America and for the National Collector's Association of Die Doubling. He pri-*

*vately lists U.S. doubled dies and other collectable variety types on both U.S. and world coins in the Variety Coin Register. For more information on either of these clubs, or to learn how to get a variety listed in the Variety Coin Register, send a self addressed, stamped business size envelope and \$0.58 to Ken Potter, P.O. Box 760232, Lathrup Village, MI 48076 0232. Contact Ken via e mail to: Kpotter256@aol.com, or visit his Educational Image Gallery located at: [www.koinpro.com](http://www.koinpro.com)*



**Figure 2a,b. Muled Presidential medal now certified by PCGS MS68. Pictures courtesy of Bill Fagan.**